



FOCUS ON WORLD SEPSIS DAY

13 SEPTEMBER 2021

SEPSIS OCCURS WHEN THE BODY'S RESPONSE TO AN INFECTION DAMAGES ITS OWN TISSUES AND ORGANS. IF UNTREATED, SEPSIS MAY LEAD TO MULTI-ORGAN FAILURE, SEPTIC SHOCK AND DEATH. SEPSIS IS THE FINAL COMMON PATHWAY TO DEATH FROM MOST INFECTIOUS DISEASES WORLDWIDE, INCLUDING THE SARS-COV-2.

 **1 in 5**
deaths is associated with sepsis*.

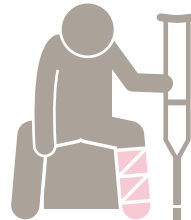
Up to **50%**
of sepsis survivors suffer from long-term physical and/or psychological effects.



80%
of sepsis cases occur outside of a hospital.



SEPSIS
is an emergency. If someone shows signs of sepsis, seek medical care immediately. Every hour counts.



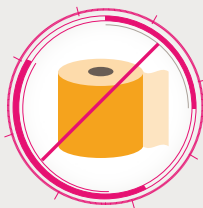
POSSIBLE SIGNS OF SEPSIS



Slurred speech or confusion



Extrême shivering, muscle pain or fever



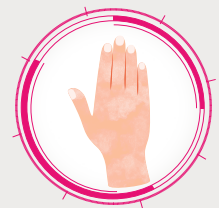
Passing no urine all day



Severe breathlessness



It feels like you are going to die



Skin mottled or discoloured

*The statistics are based on information from the United States of America.
Reference: Worldsepsisday.org

EXPERTISE YOU CAN TRUST.

www.mediclinic.co.za